



PlainsLandBank.com

Here for the Journey



Like many people, I happen to have a sweet tooth. I set out every day with good intentions — I even bring a healthy lunch to the office. At some point in the day, however, I usually find myself sipping a pumpkin spice latte or eating a homemade brownie in our break room. Fortunately for my waistline, our Plains Land Bank team members have an annual wellness competition.

This year we are excited to be participating in a global wellness challenge. We divided all of our employees into teams of seven, and each team competes against others across the globe. We are even up against some other Farm Credit associations.

The Farm Credit System is composed of four banks and 69 associations across the United States. All of us strive to achieve the Farm Credit System's mission: to provide sound and dependable credit to American farmers, ranchers and producers.

We understand that land is an investment, not a get-rich-quick scheme. Some years will be good and others bad, and no matter how much you plan for the season, many decisions will have to be made at a moment's notice. Like you, we know that there are no shortcuts to building a legacy.

Plains Land Bank has been around for over 100 years, and we are here for the duration. Just as we think investing in our employees' health is worthwhile, we believe in investing and standing behind American agriculture and all of our customers.

As the Irish proverb says, "May the road rise up to meet you. May the wind always be at your back. May the sun shine warm upon your face and the rains fall soft upon your fields."

Thank you for being a part of Plains Land Bank.

Gregory S. Lloyd
Chief Executive Officer

AMARILLO OFFICE
5625 Fulton Drive
Amarillo, Texas 79109
(806) 353-6688
(806) 353-7389 fax

PAMPA OFFICE
2526 Perryton Parkway
Pampa, Texas 79065
(806) 669-1126
(806) 665-1310 fax

PERRYTON OFFICE
506 South Main Street
Perryton, Texas 79070
(806) 435-4319
(806) 435-4280 fax

PLAINVIEW OFFICE
3102 W. Seventh St.
Plainview, Texas 79072
(806) 296-5579
(806) 296-0464 fax



Part of the Farm Credit System

ASSOCIATION SUPPLEMENT — SUMMER 2018

Cathy Scribner Begins Next Season of Life: Retirement



Plains Land Bank would like to extend our upmost gratitude to Cathy Scribner for 32 years of dedicated service. Cathy's retirement is a reminder of the changes Plains Land Bank has undergone over the years. She was there through multiple association names, mergers and two CEOs, Bob Williams and Gregg Lloyd.

Cathy came on board in 1985 as an office administrator after spending 10 years as a stay-at-home mother. At that time, payroll was calculated by hand and the office had only one computer. Under Bob's

tutelage and mentorship, she worked her way up to become chief financial officer, a position she held for 16 years.

"God has different seasons for you, and I had a beautiful, wonderful time at Plains Land Bank; everybody has always been so kind," said Cathy. "It's wonderful for y'all to go on and grow. And it's wonderful for me to move to my next phase of life."

The board of directors presented Cathy with an iPad Pro to help keep her entertained on the RV trips she plans to take with her husband, Billy. Cathy's last day at Plains Land Bank was Feb. 28.

"God has different seasons for you, and I had a beautiful, wonderful time at Plains Land Bank."

— Cathy Scribner

Canyon FFA Agricultural Issues Team Earns Second Place

The Canyon FFA agricultural issues team stopped by the Plains Land Bank boardroom to present their agricultural "issue" before heading to the state competition. The team's presentation included both a pro and a con side on the impact of migrant workers on the U.S. agriculture economy. The team placed first at the district and area competitions and took home second at the state level.



The Canyon FFA Agricultural Issues team makes a presentation to the Plains Land Bank Board of Directors on the impact of migrant workers on the economy.

What I Learned About Farm Credit on Leadership Trip

By Joy Gray, Plains Land Bank marketing manager



The 2017 Farm Credit Association Leadership Program participants, pictured in front of the U.S. Capitol, met with legislators in Washington, D.C. Plains Land Bank Marketing Manager Joy Gray is third from right.

A few months ago, I was honored to represent Plains Land Bank at the Farm Credit Association Leadership Program in Washington, D.C., and New York City. What I learned was eye-opening, educational and truly inspiring.

The program included an immersion in the history and funding of Farm Credit, legislative updates and an overview of the importance of the farm bill. I had the opportunity to sit down with my legislators and tell them how important it is to me to be a fourth-generation borrower. My husband and I financed our farms through Plains Land Bank, and I shared our recent experience of purchasing a rural home. Not only do the commercial banks shy away from financing rural homes, but they also have difficulty comprehending a farmer's balance sheet.

Fortunately, Plains Land Bank and Farm Credit were there for our family.

While in D.C., we also met with the Farm Credit System's regulator, the Farm Credit Administration, and learned how their regulations protect our customers. We also visited Mount Vernon to discover more about the true leader himself, George Washington. We finished off the experience with a trip to the Funding Corporation and Goldman Sachs in New York to see firsthand how the Farm Credit System's debt securities are issued, marketed and traded.

Being a part of Plains Land Bank means that we are all a part of something so much bigger. We are a part of an organization that is striving to protect the way we live as farmers and ranchers who know that agriculture is a fundamental pillar in our society. I love and appreciate Farm Credit. From our farms to our home, Farm Credit has been making my family's dreams come true for generations. I am so incredibly grateful to have been able to participate in this leadership program, and to have the opportunity to meet and personally thank so many of the people who have changed our lives.

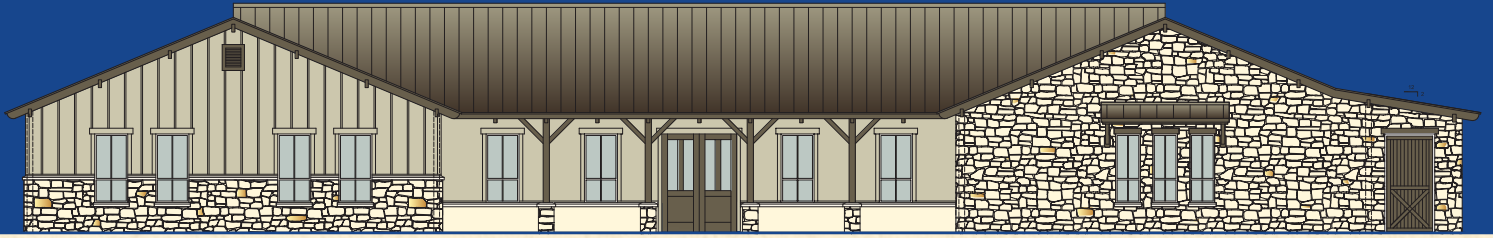


Mount Vernon was one stop on the leadership trip.



Association leaders visited a stock trading firm in New York City.

OPEN FOR BUSINESS



The Plainview branch's new office building at 3102 West Seventh Street opened this spring.

Plains Land Bank's new office building in Plainview has officially opened for business. The new location, which is south of the duck pond, is on the corner of West Seventh and Ennis at 3102 West Seventh Street.

"Plains Land Bank has made a significant investment in personnel and facilities across our territory," explained Kenneth Hooper, senior vice president and Plainview branch manager. "This office is a tangible reflection of

our plan to grow not only loan volume, but service for our customers. The new facility provides three critical components: space for employees, improved customer access and improved visibility in the community."

The Plainview Chamber of Commerce's ribbon cutting for the 4,295-square-foot building was done at the open house celebration on June 21. We invite you to stop by and visit us anytime.

Welcome New Team Members



Plains Land Bank is excited to welcome several new employees to the team.

Aaron Brewer, loan closer associate, central office

Hope Conner, office administrator I, Amarillo branch

Matt Hudson, loan officer, Pampa branch

Benjamin Liddle, credit analyst associate, central office

April Mashburn, accounting specialist, central office

Cole Pierce, loan officer, Plainview branch

Mandy Richburg, loan administrator, Pampa branch

Jordan Rodriguez, office administrator I, Perryton branch

Alyssen Short, loan administrator, Amarillo branch

Holly Westfall, loan administrator associate, Plainview branch

Amie Willeford, loan administrator, Perryton branch

Stefani Zysling, loan officer, Amarillo branch

